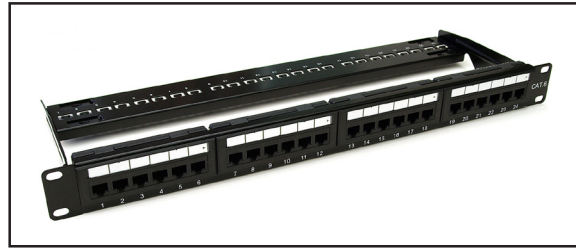


## CATEGORY 6 UNSHIELDED PATCH PANEL



### FEATURES

- CE, Lead-free & RoHS2 compliant.
- ISO/IEC 11801, CENELEC EN 50173-1 and IEC 60603-7
- IEC 60603-7-2 and IEC 60603-7-4
- Compatible for T568A and T568B wiring schemes

### SPECIFICATIONS

Material	Panel	SPCC, 1.5 mm thickness painted black (RAL 9005)
	RJ45 Jack Housing	PBT
	RJ45 Jack Contact	Phosphor bronze, Nickel plated, Gold plated on plug contact area
	IDC Housing	PC
	IDC Terminal	Terminal: Phosphor bronze, Tin plated
	PCB	FR4, Thickness: 1.6 mm
Electrical	Voltage proof	1000V DC or AC peak, contact-to-contact.
	Current-carrying capacity	0.75 Amps minimum
	Contact resistance	20 MOhm maximum
	Insulation resistance	500 MOhm minimum at 100V DC
	Input to output resistance	200 MOhm maximum
	DC resistance:	0.2 Ohm maximum
Mechanical	Mechanical operation	750 mating cycles
	Effectiveness of connector coupling devices	50N for 60s ± 5s.
Environmental	Temperature	-10°C ~ 60°C
	Humidity	10% ~ 90%RH

### PART NUMBER GENERATOR

INTEL6U24PP	Category 6 Unshielded 24 Port Patch Panel
-------------	---